

2018/2019 Work Program & Budget

EXPANSION

“The San Joaquin Regional Rail Commission is proud to announce the expansion of the ACE service to Ceres thanks to the funding we received from SB 1 and SB 132. With the Amtrak San Joaquins also launching the Morning Express service that will get riders from the Central Valley to Sacramento before 8 am, SJRRC is looking forward to continuing our commitment to provide growth in both of the services we offer and welcomes you aboard.” Steve Dresser >> SJRRC Chair

The San Joaquin Regional Rail Commission’s Work Plan & Budget for Fiscal Year 2018/2019 summarizes new and ongoing projects and activities that the SJRRC is responsible for delivering.

The San Joaquin Regional Rail Commission Board of Directors

Steve Dresser

Chair
City of Lathrop

Christina Fugazi

Vice Chair
City of Stockton

Bob Elliott

Commissioner
San Joaquin County

Scott Haggerty

Commissioner
Alameda County

Bob Johnson

Commissioner
City of Lodi

John Marchand

Commissioner
City of Livermore

Debby Moorhead

Commissioner
City of Manteca

Leo Zuber

Commissioner
City of Ripon

Stacey Mortensen

Executive Director

A Message From the Executive Director

Stacey Mortensen

Executive Director

Working together pays off! Valley agencies have been working diligently over the last decade to create a vision for passenger rail expansion that connects people to economic opportunities, energizes old downtowns and creates viable alternatives to the congested highways.

The Rail Commission has been at the center of these efforts, pushing to improve both the San Joaquins and ACE rail services. Consolidation of effort and resources and leveraging of enthusiastic local support has resulted in unprecedented state funding to expand the commuter and intercity rail programs in the region.

Through a combination of over \$400M from SB1 and SB132, and \$500.5M from the Transit and Intercity Rail Capital Program (TIRCP), the ACE and San Joaquin rail services will be transformed. ACE will be extended in phases southward to Ceres and Merced and north to Sacramento and Natomas. New rail cars will be added to existing ACE trains and existing parking areas will be expanded. Two new San Joaquin trains will be added from the Valley to Sacramento and make connections to the Sacramento International Airport. As the multi-year environmental process comes to completion this summer, the first construction projects will begin in late Fall.

Additionally, over \$30 million in air quality grants from the Bay Area Air Quality Management District, San Joaquin Valley Air Pollution Control District, Transit and Intercity Rail Capital Program, and the Low Carbon Transit Operators program made it possible for the Rail Commission to procure four new Tier IV locomotives, the cleanest and most powerful locomotives on the market. Being manufactured locally by Siemens Industry, Inc. out of Sacramento, these new units have the power to expand the current ACE trains from seven cars to 10 cars, adding more than 40% seating capacity.

Another major ACE service change is the upcoming Saturday Service Pilot Program funded by SB1. Information gathered via survey in October 2017 in partnership with SJCOG and RTD identified unmet transit needs from over 2,500 respondents. Weekend service and better connections to BART ranked very high and the Pilot Program is a flexible way to test out potential schedules.

The Federal Positive Train Control mandate will be the primary focus for the Operations Group and the agency in the first six months, as all passenger rail services in the U.S. will be required to operate with a new system that can automatically stop trains and reduce collisions. Each segment of rail, station, train set and train crew must be trained and tested with Union Pacific before the Federal Railway Administration will award certification of the system. The deadline for certification is December 31, 2018.

Expansion & Capital Projects

2017/2018 Successes

- **Locomotive Procurement** – New Siemens Charger Tier IV locomotives were procured, which produce less greenhouse gas emissions while achieving much higher horsepower levels capable of pulling longer train-sets. Longer train-sets are needed to keep up with ridership demand and expanding ACE services.
- **TIRCP Grant** – In April of 2018, CalSTA awarded TIRCP grants via SB 1. SJRRC and SJPA, with the joint Valley Rail proposal, were awarded \$500.5 million dollars for expansion, equipment, and construction work. This funding will expand ACE service to allow a trip from Sacramento to San Jose, Ceres to Sacramento, and Ceres to San Jose. For the Amtrak San Joaquins, this will add two additional round trips.
- **ACE Extension Draft EIR for SB 132 Funded Project (Stockton, Lathrop, Ceres, Merced)** – SB 132 passed in 2017 and set aside \$400 million for the ACE expansion project from Lathrop to Merced. The Draft Environmental Impact Report (DEIR) was circulated for public comment on April 13, 2018, and will close May 28, 2018.
- **Stockton Regional Maintenance Facility (RMF) Wayside Power Installation Project** – Power cabinets were installed at the RMF, which would allow the facility to have power during maintenance projects instead of using locomotives for power. This helped reduce noise and pollution from the locomotives.
- **Union Pacific Railroad Memorandum of Understanding (MOU) and Modeling Analysis** – ACE rail operates on Union Pacific tracks, and a new MOU was required and is a critical component of establishing expanded ACE service. The MOU was approved for the new service based on the funded SB 132 project. As part of the MOU, a modeling analysis of the service was necessary to analyze potential impacts to Union Pacific's freight schedules and to ensure ACE could continue operating without impacting passenger schedules for service along the trunk line to San Jose.

2018/2019 Initiatives

- **ACE SB 132 Final Environmental Document, Final Design, and Construction** – The Final Environmental Impact Report (FEIR) should be complete by August of 2018. Once ready, final design efforts will be coordinated with the Union Pacific. SJRRC will look to enter into an agreement with Union Pacific for track construction, and contract with consultants for platform and station design. Construction will occur at various locations between Lathrop and Ceres as part of the ACE extension related improvements.
- **ACE/San Joaquin Extension Environmental Document Stockton to Natomas** – With the award of the TIRCP grant, environmental work for this project will be complete by late Spring of 2019. This part of the SJRRC expansion will explore track improvements necessary on the Sacramento subdivision, new stations, and equipment needs for this new alignment.
- **Cabral Parking and Channel Street Project Design and Construction** – The Cabral Parking project will be constructed at the Western Pacific lot that is currently being used as a temporary parking lot. SJRRC staff is working to complete the environmental determination and will solicit consultants to compete on the design. With a grant from SJCOG, improvements on Channel Street will offer better connectivity between the San Joaquin Regional Transit District (RTD) and Cabral Station. The City of Stockton will administer the construction contract, SJRRC staff will provide oversight coordination during construction.
- **Cabral Station to Stockton RMF Track Extension Project** – This fully funded project will provide the final track extension between the RMF and Cabral Station. Coordination with Union Pacific will include new track and bridge improvements. The environmental determination is being revised for the updated project.
- **San Joaquins Minor Capital Project Delivery Coordination with Amtrak** – SJPA has an ongoing annual allocation of approximately \$500,000 a year for continued capitalized maintenance and upgrades for the Amtrak service. Most of the capitalized maintenance occurs at the platforms and stations. Currently, all the work is performed by Amtrak staff with SJPA providing oversight on project delivery. Based on the outcome of the Amtrak meeting and project delivery requirements to ensure timely use of funds, SJPA will evaluate to determine if contracting with consultants to perform work will assist with project completion.
- **Platform Extension Projects Lathrop, Tracy, Vasco, Livermore, Pleasanton, and Fremont Stations** – The platform extension project is to accommodate additional growth in the future and accommodate 10 car train-sets. The funded platforms are approximately 90% designed and options are being explored for the unfunded platform in Fremont. It is anticipated that construction will begin in the fall of 2018.

"The ACE train is a life saver because I don't have to spend six hours a day on the road driving from Stockton to Great America. I have the chance to meet great people and relax on my commute coming and going to the Bay." Essence Craney >> ACE train passenger

Planning Efforts

2017/2018 Successes

- **Developed Plan to Extend ACE to Sacramento** – SJRRC planning included alignment and station development, capital costs, ridership forecasts, and community outreach as well as operational and financial plans for extending ACE service to Sacramento. The SJRRC Board unanimously approved moving forward with applying for funding for the expansion to Sacramento at the December 1st, 2017 SJRRC board meeting.
- **Successful TIRCP Application for Extending ACE to Sacramento** – On January 12, 2018 the SJRRC submitted a joint TIRCP application with the SJJPA for expanded ACE and San Joaquins service to Sacramento. In April of 2018, CalSTA awarded the SJRRC \$500.5 million for the Valley Rail project. This application will enable the SJRRC to extend to/from Sacramento – bringing passengers from the Northern San Joaquin Valley to Sacramento, and taking Sacramento area passengers to the Bay Area. SJRRC received widespread support for the application throughout the San Joaquin Valley and Sacramento Region with nearly 150 letters of support from elected officials, agencies, organizations, and other key stakeholders.
- **Completed Initial Planning for EMU/DMU Between San Joaquin and Alameda Counties** – At the request of Alameda County, SJRRC initiated planning for an EMU/DMU service between San Joaquin and Alameda County which includes a BART-ACE connection at Greenville Road. This work included technology evaluation, alignment and station planning, capital costs, travel times, and community outreach. This planning work is being utilized by the new Tri-Valley – San Joaquin Valley Regional Rail Authority that was established by AB 758 (Baker/Eggman) in 2017.
- **Channel Street Improvement Project** – As part of improving the station area around the Robert J. Cabral Station in Downtown Stockton, SJRRC has received \$2 million from the San Joaquin Council of Governments' Measure K funds to improve the pedestrian and bicycle access along Channel Street between the Downtown Transit Center and Cabral Station. As part of this project new sidewalks, curb ramps, lighting, and roadway improvements will be constructed so that all modes of transportation benefit from the project.
- **Core Capacity Study** – At the March 2, 2018 SJRRC Board Meeting staff presented the potential impacts on core capacity resulting from the implementation of the proposed extension to Ceres and Sacramento. The technical memo that was prepared for this agenda item provided ridership forecasts and identified the additional coaches needed to accommodate these passengers for each ACE train.
- **Modesto Transit Center Improvement Program** – In coordination with the City of Modesto, SJRRC developed an improvement program for the Modesto Transit Center which is the future Modesto ACE Station. SJRRC worked with the City of Modesto and StanCOG to secure local and regional funds for the improvement program. The \$2.2 million Phase 1 is expected to be completed within a year.

2018/2019 Initiatives

- **Station Area Planning for Sacramento Extension** – SJRRC will work with Sacramento, Elk Grove and Lodi on coordinating station area planning and connectivity with other modes at new stations associated with the Sacramento Extension.
- **Identify Improvements Needed for Additional Service to San Jose** – SJRRC will work with MTC, Alameda CTC, Alameda County, UPRR, CCJPA, City of Fremont, Union City, other agencies (including the State), organizations, and local stakeholders to find a viable solution for ACE service expansion and how ACE fits in the broader context of goods movement and passenger rail service expansion in the Northern California Megaregion.
- **Station Area Planning for Existing ACE Station** – Improving ACE stations and access to stations is a high priority for SJRRC. At each station, SJRRC will develop plans for parking, pedestrian and bicycle access, transit connectivity, and pursue opportunities to promote transit oriented development. SJRRC will be working with our regional and local partner agencies and other stakeholders to help improve the rider experience at all of our stations.
- **Ridership Reports and Benefits Calculations** – Over the next year, SJRRC will improve its understanding of ACE ridership to help make decisions in improving the service and setting priorities through a data-driven approach. SJRRC will also show how ACE provides benefits to the communities it serves and the wider regions of the Silicon Valley, the Tri-Valley, and the San Joaquin Valley including greenhouse gas and air pollution reductions, safety benefits, and congestion benefits among many others.
- **Modesto and Ceres Station Area Improvements** – SJRRC will continue to work with the City of Modesto through the implementation of the Modesto Transit Center/Station Improvements and will work with the City of Ceres to get local and regional funds to improve the Ceres Station Area in Downtown Ceres.

Safety & Security

2017/2018 Successes

- **Safety and Security Exercises** – Multiple safety and security exercises that included two full scale simulations. One was with Amtrak in Stockton and the second was with Caltrain in San Jose. These were complemented with several table top discussion based exercises evaluating lessons learned and editing response plans and procedures. This exceeds the federal requirement of one drill biennially.
- **Outreach** – SJRRC staff accounted for over 10% of the outreach for California Operation Lifesaver (CAOL). This included school presentations and community events regarding rail safety. By utilizing a partnership with CAOL, and working with community groups and partner transit systems, overall rail safety outreach increased by 11% over 2017 numbers.
- **Safety Coordination** – The first joint first responder equipment familiarization training between ACE and Amtrak was held in Stockton that covered a three day time period. The event drew first responders from as far away as Sacramento to the north and Merced to the south and Berkeley to the west. Many agencies in between attended as well for a total number reached at over 110. The purpose of this exercise was to familiarize first responders with train equipment, from the locomotives to passenger cars.
- **Hazard Identification and Tracking** – In 2017-2018, ACE implemented a Hazard Identification and Tracking procedure and trained staff in its purpose. The goal of this new procedure is to provide employees and customers with a way to report a hazardous condition, assign it to the appropriate employee for remediation, track progress and close out the problem all while keeping the reporting person up to date on the progress.

2018/2019 Initiatives

- **Safety Train** – Partnering with CAOL, local first responders, Union Pacific Railroad, Burlington Northern Santa Fe and Amtrak, ACE staff will promote railroad safety in the Stockton region by operating a “safety train” throughout areas with high rates of trespassing and grade crossing violations. Promoting this through print and electronic media, a rail safety booth and the persons stopped by law enforcement for trespassing, the goal is to reach over 10,000 members of the community.
- **Urban Shield** – ACE staff will partner with the Alameda County Sheriff’s Office in September 2018 to participate in Urban Shield. At this 48 hour event held in the Bay Area, scenarios will be enacted allowing first responders and ACE to continue refining and improving response plans and procedures to a variety of natural disasters and man-made events.
- **Update Automated External Defibrillators (AED’s)** – In the fall of 2018, the Safety and Security Department will begin updating all onboard Automated External Defibrillators (AED’s) using safety grant funds. The AED’s will be much more advanced and far easier for staff to use than the current 18 year old models. The new devices will be highly automated and provide feedback to staff who are using them. Staff training on the new devices will be reduced to one hour versus the current four hours required.

Operations

2017/2018 Successes

ACE

- **Ridership Increase** – 1.36 million riders took ACE this year, an increase of over 60,000 from the previous fiscal year. Daily ridership averaged 5,355 trips per day.
- **ACE Revenue Growth** – Revenue increased over \$700,000 from projections, due to the increase in ridership.
- **E-Ticketing** – at the May SJRRC Board meeting, a contract was approved for a partnership with Masabi to provide e-ticketing for the ACE service. This new system will also include an ACE app for tickets, and will provide the ability for every ticket type to be available on a mobile device, including Monthly Passes and 20-Ride tickets.
- **On Time Performance** – On Time Performance – ACE trains had an 88.75% On Time Performance (OTP) for the fiscal year. ACE operations will continue to work with Herzog, host railroad Union Pacific, and rail partners including the Capital Corridor and Caltrain to improve OTP above 90%.
- **Bicycles** – nearly 90,000 bikes were carried on board ACE trains during the fiscal year, an average of over 350 per day. The 90,000 bicycles marks one of the highest number of bikes taken on ACE in the agencies history.

SJPA

- **New Locomotives** – Six (6) Tier IV Locomotives went into service in November 2017, and operate on the San Joaquin and Capitol Corridor alignments.

2018/2019 Initiatives

- **Positive Train Control (PTC)** – Positive Train Control (PTC) is a federal mandate that all trains, including passenger rail and freight, must have in place by December 31st, 2018. PTC is equipment that can automatically stop a train in case of an emergency. To implement PTC on board, each segment of rail, each station, and each train set must be tested, as well as the installation of trackside equipment, which is dependent on the host railroads, prior to certification. The operations team will be coordinating with Herzog, Union Pacific, and their on-board train staff to ensure proper training, testing, and implementation by the federally mandated deadline.
- **Saturday Service** – The operations team is heading the implementation of Saturday Service in early 2019, which includes working with rail contractor Herzog, as well as Union Pacific, Capital Corridor, and Caltrain for potential times.
- **New Rail Cars** – The procurement of passenger rail cars is needed for the expansion of core ACE service, which will be growing from seven car sets to ten car sets on the main line between the Central Valley and Bay Area with the new locomotives. New passenger rail cars will also be needed for expansion into Ceres and Sacramento.

ACE Community Engagement & Marketing

2017/2018 Successes

- **Community Outreach** – In Santa Clara County, ACE staff worked closely with the Silicon Valley Leadership Group and Silicon Valley Bike Coalition, as well as San Jose State University to provide information about ACE services to staff and students. In Alameda County, outreach events ranged from meetings with Bishop Ranch to display booths at Oracle, the Livermore Chamber of Commerce events, Lawrence Livermore National Laboratory, and a title sponsorship of Trains for Autism event. In San Joaquin County, event partnerships included Family Day in the Park, which attracted 20,000 attendees, the Pride Festival, and State of the City hosted by the Greater Stockton Chamber of Commerce.
- **Unmet Transit Needs** – Working with SJCOG and RTD, a survey was put out to find Unmet Transit Needs regarding ACE riders. Using text alerts, social media, and other digital marketing means, over 2,500 responses were gathered regarding Unmet Transit Needs. Of the surveys, over 70% requested more frequent service, and 40% of respondents requested to see shorter travel times, more reliable service, and a better BART connection. The survey was successful enough that SJCOG included the survey results in their Unmet Transit Needs report.
- **DIBS** - In partnership with SJCOG, a rideshare incentive was started at two stations most impacted by parking, the Lathrop/Manteca and Tracy Stations. This partnership utilized the SJCOG web site, www.dibsmysway.com, and encouraged transit riders to carpool to the station, with the organizer of the carpool receiving a \$75 gas gift card. Twenty riders signed up to lead carpools, and options will be explored to continue the program in some capacity in 2018/2019.

2018/2019 Initiatives

- **ACE 20th Anniversary** – In October, the ACE service will officially turn 20 years old, and plans are underway to celebrate that milestone with special promotions and recognition events surrounding the milestone.
- **Content Creation** – The CEM team will move towards more content creation through video, including topics on train terminology, safety, and growth initiatives. Partnerships with Siemens on videos and information leading up to the delivery of the new ACE/Siemens Charger locomotives will be included.
- **Specific Segment Marketing** – Marketing efforts will focus on ridership growth where capacity is available, targeted to the areas in Santa Clara county between the Great America station and Downtown San Jose. Outreach will include targeted digital ads, fliers, posters, and radio and TV commercials to promote the ACE service.
- **Saturday Service** – With a grant through SB 1, regular Saturday service will launch in early 2019, and an opportunity to market the ACE service to a new audience. Marketing efforts will include a two-part approach; advertising, including digital ads with Facebook and Instagram, radio, TV, and print promotions, and partnerships to promote specific events through the corridor, working closely with visitor bureau's, wine commissions, sports venues, and large seasonal events.
- **Launch of a New Web Site** – Currently working with vendor Americaneagle.com, the all new www.acerail.com Web site will be launched with fresh graphics and a new design. The new Web site will comply with industry standards for ease of use with other transit agencies.

SJPPA

2017/2018 Successes

- **Morning Express to Sacramento** – Launched May 7th, a new temporary layover facility was identified in Fresno as well as station improvements to accommodate additional traffic.
- **Submitted TIRCP Application for Additional Service to Sacramento** – On January 12, 2018 the SJPPA submitted a joint TIRCP application with the SJRRC for expanded San Joaquins and ACE service to Sacramento. If successful, this application will enable the SJPPA to deploy the 8th and 9th San Joaquins daily round trips and double the frequency of San Joaquins service to/from Sacramento. SJPPA received widespread support for the application throughout the San Joaquin Valley and Sacramento Region.
- **Selection of the UPRR Sacramento Subdivision for Expanded Service to Sacramento at the July 28, 2017 SJPPA Board Meeting** – For over six months, staff successfully worked to develop a program to evaluate the increased service to/from Sacramento. This work included both technical study and outreach work with the communities potentially affected by the alignment/station options.
- **Partnered with Shasta Regional Transportation Agency (SRTA) on their 2018 TIRCP Application** – At the November 17, 2017 SJPPA Board Meeting the SJPPA took action to move forward with a formal partnership with SRTA to provide financial support for their proposed electric express bus service between Redding and Sacramento.

2018/2019 Initiatives

- **Morning Express to the Bay Area** – With planning efforts looking towards a mid-2019 start, The new Morning Express Service to the Bay Area is being studied, including station improvements and marketing efforts.
- **Complete Environmental Review for the Sacramento Extension** – If the SJPPA TIRCP application is funded, environmental review for the improvements needed to provide additional service to Sacramento is expected to be completed by mid-2019.
- **Improve On-Time Performance and Safety** – SJPPA is working with Caltrans to provide additional incentives to host railroads to substantially improve San Joaquins on-time performance. SJPPA is increasing efforts to reduce trespassing in the freight right-of-way to increase public safety and the reliability of the San Joaquins.

SJPA Marketing

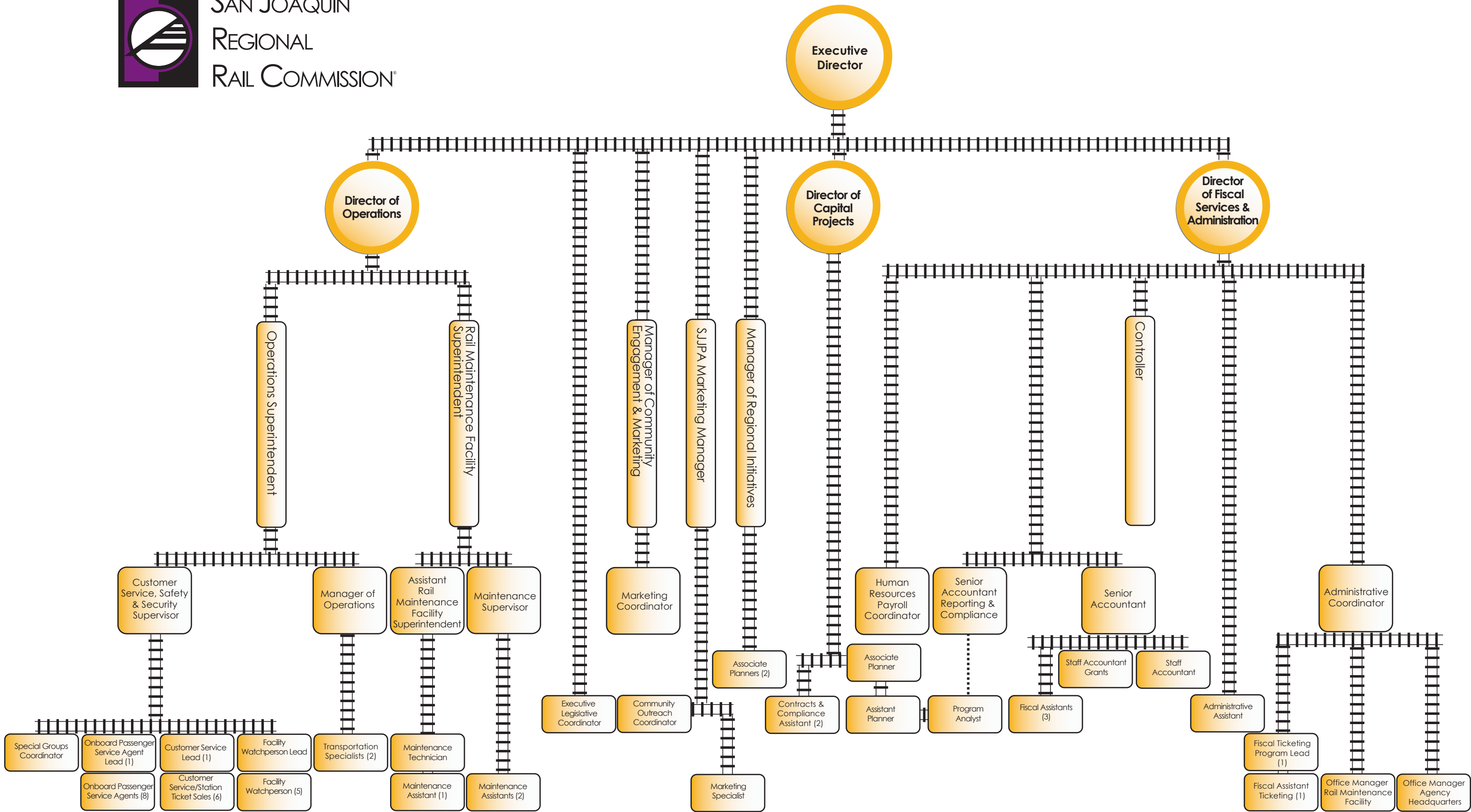
2017-2018 successes

- **Launch of the Sacramento Morning Express** – The Sacramento Morning Express Services was designed to increase business travel and same-day leisure travel on Amtrak San Joaquins. A six-month advertising campaign supported the launch of the service.
- **#Railtails Social Media Photo Contest** – The #Railtails photo contest was a tactic used to grow social media audiences, directly engage passengers, and catalogue user content to post on social media challenges.
- **First Timers Advertising Campaign** – Part of the challenge of attracting new passengers are the perceived impediments of train travel. The ‘First Timers’ campaign used three different story scenarios of ‘first time’ riders to help potential passengers navigate past travel impediments.

2018-2019 initiatives

- **Launch of Bay Area Morning Express** – Following the Sacramento Morning Express Campaign, SJPA plans to launch the Bay Area Morning Express. Pending funding, SJPA will engage in a six-month advertising campaign in support of the service.
- **Ridership Survey and Analysis** – A key component to marketing and advertising is understanding the market and ridership. With additional funding requested from the State, SJPA plans to engage in a detailed marketing and ridership survey to help plan future marketing and advertising activities to provide measurables to retest following marketing activity.
- **Launch New AmtrakSanJoaquins.com** – SJPA will be launching a new Amtrak San Joaquins website to better communicate with its passengers. The current website is hosted by Amtrak which poses several issues in terms of expansion and content restrictions. The new website will feature more targeted information and helpful trip planning tools.

BOARD OF DIRECTORS



TOTAL BUDGETED POSITIONS SHOWN: 68



Capital Projects 2018/2019	Project Total for FY 2018/2019	FTA Section 5307 Funds	FTA Section 5309 Funds	FTA Section 5337 Funds	FTA CMAQ Funds	IRS Bond Rebate Funds	State of California Cost Savings Funds	State Inter-City Capital Funds	State of California Cap & Trade TIRCP	State of California Prop. 1A Funds	State of California Prop. 1B TSSSDRA Funds	State of California Cal OES State Prop. 1B Security Funds	State of California Prop. 1B PTMISEA Funds	State of California Cal-EMA Funds	State of California SB 1 Transportation Funds	State of California SB 132 ACE Expansion Funds	Regional Local Funds	MTC STA Funds	Regional LCTOP Funds	Air District Grant BAAQMD SJVAPCD	ACTC Measure B	Measure K - Capital Program	Measure K - Smart Growth	SJCOG RTIF
SJCOG Consolidated Loan	\$ 1,118,012			894,410																		223,602		
A1 & A2 Bond Repayments	3,035,912			2,145,940		889,972																		
UPRR Capital Access Fee	3,242,516	487,932		2,106,081																		648,503		
UPRR Capitalized Maintenance Projects	4,000,000	2,000,000																			2,000,000			
ACE Extension - Natomas to Stockton	100,000,000								100,000,000															
ACE Extension - Lathrop to Ceres/Merced	65,865,000															65,865,000								
Locomotives (4)	23,396,568															15,250,768		645,800	7,500,000					
Platform Extension Projects	8,959,000								8,959,000															
Cabral Station Track Extension	7,331,989	555,888	1,785,020		111,081					2,500,000												2,380,000		
Positive Train Control	4,669,067	71,600		2,617,663	373,058							1,026,579	580,167											
Rolling Stock	3,500,000				3,500,000																			
East Channel Street Improvements	2,042,287																						2,000,000	42,287
Robert J. Cabral Parking Lot Expansion	1,899,490				1,840,530										58,960									
Capital Spares	1,125,000	416,676		342,423											60,000			5,901				300,000		
Safety/Security Projects	1,044,087										373,817	598,076		72,194										
E-Ticketing	354,613										106,439		248,174											
Coordinated Planning Service	300,000																300,000							
SJRRC Maintenance Vehicles	120,000																					120,000		
SJJPA - Corridor Safety and Security Projects	4,062,219											4,062,219												
SJJPA - Station and Transportation Projects	2,512,716						2,512,716																	
SJJPA - Mid-Corridor Layover Facility	1,750,000											1,750,000												
SJJPA - Minor Capital Projects	1,000,000							1,000,000																
Total	\$ 241,328,476	3,532,096	1,785,020	8,106,517	5,824,669	889,972	2,512,716	1,000,000	108,959,000	2,500,000	480,256	7,436,874	828,341	72,194	118,960	81,115,768	300,000	5,901	645,800	7,500,000	2,000,000	3,672,105	2,000,000	42,287

Fiscal Year 2018/2019 SJRR/ACE Project Management Services and Supplies Budget	Prior Year SJRR/ACE Combined Operating Budget	2018/2019 SJRR Operating Budget	2018/2019 ACE Service Operating Budget	2018/2019 SJRR/ACE Combined Operating Budget	% Change from PY to CY
Operating Revenue					
Measure K	2,422,881	1,209,714	1,090,913	2,300,627	
SJCOG - Local Transportation Funds (LTF)	3,005,229	-	3,308,524	3,308,524	
Fare Revenues	9,000,000	-	10,000,000	10,000,000	
ACTC Measure B Local	2,792,636	-	2,982,148	2,982,148	
ACTC Measure BB Local	1,314,181	-	1,403,364	1,403,364	
Santa Clara VTA Local	3,342,413	-	3,658,495	3,658,495	
Transportation for Clean Air (TFCA)	100,000	-	80,000	80,000	
SJCOG - State Transit Assistance (STA)	460,417	-	590,787	590,787	
MTC - State Transit Assistance (STA)	424,491	-	610,141	610,141	
ACTC Measure B Local - Admin Fee	15,000	-	15,000	15,000	
ACTC Measure BB Local - Admin Fee	15,000	-	15,000	15,000	
Amtrak Thruway Service	75,000	-	75,000	75,000	
Ticket Sales Others	327,970	-	327,970	327,970	
State Rail Assistance	-	-	1,200,000	1,200,000	
High Speed Rail	250,000	-	101,834	101,834	
State Intercity Rail Funds	-	-	-	-	
Total Operating Revenue	\$ 23,545,218	\$ 1,209,714	\$ 25,459,176	\$ 26,668,890	13%
Project Management Services and Supplies					
Salaries/Benefits/Contract Help	4,504,179	533,872	4,611,207	5,145,079	14%
Office Expenses/Postage	55,988	16,245	39,743	55,988	0%
Subscriptions/Periodicals/Memberships	15,750	6,325	9,425	15,750	0%
Office Equipment Leases / Supplies / Maintenance / Furniture	87,278	31,808	55,470	87,278	0%
Computer Systems	52,150	16,915	35,235	52,150	0%
Communications	81,649	10,887	70,762	81,649	0%
Motor Pool	76,270	21,700	64,770	86,470	13%
Transportation/Travel	32,750	6,200	26,550	32,750	0%
Training	20,400	6,315	18,085	24,400	20%
Audits/Regulatory Reporting	83,000	14,200	68,800	83,000	0%
Professional Services Legislative	50,000	-	50,000	50,000	0%
Professional Services Legal	90,000	40,000	50,000	90,000	0%
Professional Services General	205,985	45,847	160,138	205,985	0%
Professional Services Grants	-	-	-	-	0%
Publications/Legal Notices	24,000	11,000	16,000	27,000	13%
Taxes/Assessments	23,025	23,025	-	23,025	0%
Project Management, Services & Supplies Subtotal	5,402,424	784,339	5,276,185	6,060,524	12%
Contracted Services					
Maintenance of San Joaquin County Facilities	79,270	84,170	-	84,170	6%
Maintenance & Improvements System Wide ACE Stations	51,900	-	51,900	51,900	0%
Maintenance of Headquarters Structures/Grounds	223,980	46,479	155,251	201,730	-10%
ACE Operations & Maintenance	5,939,744	-	7,305,012	7,305,012	23%
Consumables/Repair Parts	1,000,000	-	1,000,000	1,000,000	0%
Operating Leases	102,585	30,385	78,200	108,585	6%
Fuel	1,579,217	-	1,554,027	1,554,027	-2%
Railroad Maintenance, Oversight/Dispatching	1,890,000	-	2,105,000	2,105,000	11%
Insurance	2,589,416	152,331	2,659,919	2,812,250	9%
Insurance Management Fees	150,000	22,500	127,500	150,000	0%
Security Services/Safety Programs	362,385	42,785	319,600	362,385	0%
FRA Drug Testing Program	7,100	-	7,100	7,100	0%
Community Engagement & Marketing	332,250	25,000	307,250	332,250	0%
Special Trains	327,970	-	327,970	327,970	0%
Passenger Services	14,500	-	14,500	14,500	0%
Ticketing Services	485,120	-	824,370	824,370	70%
Professional Services Operations	440,921	21,725	753,696	775,421	76%
Communications Operations	203,811	-	204,771	204,771	0%
Communications WiFi	129,856	-	153,406	153,406	18%
Emergency Ride Home/Emergency Bus Bridges	37,500	-	38,250	38,250	2%
Rail Maintenance Facility	925,414	-	925,414	925,414	0%
San Joaquin Intercity Rail Operations	-	-	-	-	0%
Contracted Services - Sub-Total	16,872,939	425,375	18,913,136	19,338,511	15%
Shuttle Services	1,269,855	-	1,269,855	1,269,855	0%
Total Operating Expenses	\$ 23,545,218	\$ 1,209,714	\$ 25,459,176	\$ 26,668,890	13%

Fiscal Year 2018/2019 SJJPA Project Management Services and Supplies Budget	Prior Year SJJPA Operating Budget	2018/2019 SJJPA Operating Budget	% Change from PY to CY
Operating Revenue			
Measure K			
SJCOG - Local Transportation Funds (LTF)			
Fare Revenues			
ACTC Measure B Local			
ACTC Measure BB Local			
Santa Clara VTA Local			
Transportation for Clean Air (TFCA)			
SJCOG - State Transit Assistance (STA)			
MTC - State Transit Assistance (STA)			
ACTC Measure B Local - Admin Fee			
ACTC Measure BB Local - Admin Fee			
Amtrak Thruway Service			
Ticket Sales Others			
State Rail Assistance			
High Speed Rail			
State Intercity Rail Funds	52,093,699	53,253,882	
Total Operating Revenue	\$ 52,093,699	\$ 53,253,882	2%
Project Management Services and Supplies			
Salaries/Benefits/Contract Help	1,604,585	1,544,968	-4%
Office Expenses/Postage	14,863	15,489	4%
Subscriptions/Periodicals/Memberships	5,000	5,000	0%
Office Equipment Leases / Supplies / Maintenance / Furniture	-	-	0%
Computer Systems	5,000	5,000	0%
Communications	27,216	28,905	6%
Motor Pool	12,000	21,314	78%
Transportation/Travel	30,000	30,000	0%
Training	-	-	0%
Audits/Regulatory Reporting	20,000	20,000	0%
Professional Services Legislative	50,000	50,000	0%
Professional Services Legal	50,000	50,000	0%
Professional Services General	-	369,500	100%
Professional Services Grants	65,000	67,000	3%
Publications/Legal Notices	5,000	5,000	0%
Taxes/Assessments	-	-	0%
Project Management, Services & Supplies Subtotal	1,888,664	2,212,175	17%
Contracted Services			
Maintenance of San Joaquin County Facilities	-	-	0%
Maintenance & Improvements System Wide ACE Stations	-	-	0%
Maintenance of Headquarters Structures/Grounds	26,250	48,500	85%
ACE Operations & Maintenance	-	-	0%
Consumables/Repair Parts	-	-	0%
Operating Leases	-	-	0%
Fuel	-	-	0%
Railroad Maintenance, Oversight/Dispatching	-	-	0%
Insurance	15,000	38,000	153%
Insurance Management Fees	2,500	2,500	0%
Security Services/Safety Programs	-	-	0%
FRA Drug Testing Program	-	-	0%
Community Engagement & Marketing	1,000,000	1,500,000	50%
Special Trains	-	-	0%
Passenger Services	-	-	0%
Ticketing Services	-	-	0%
Professional Services Operations	20,000	20,000	0%
Communications Operations	8,000	10,250	28%
Communications WiFi	-	-	0%
Emergency Ride Home/Emergency Bus Bridges	-	-	0%
Rail Maintenance Facility	-	-	0%
San Joaquin Intercity Rail Operations	49,133,285	49,422,457	1%
Contracted Services - Sub-Total	50,205,035	51,041,707	2%
Shuttle Services	-	-	0%
Total Operating Expenses	\$ 52,093,699	\$ 53,253,882	2%

RESOLUTION SJRRC-R-17/18-42

RESOLUTION OF THE BOARD OF COMMISSIONERS OF THE SAN JOAQUIN REGIONAL RAIL COMMISSION ADOPTING THE SAN JOAQUIN REGIONAL RAIL COMMISSION/ACE/SJJPA FISCAL YEAR 2018/2019 WORK PROGRAM AND OPERATING BUDGET OF \$79,922,772 AND CAPITAL BUDGET OF \$241,328,476

WHEREAS, the San Joaquin Regional Rail Commission Joint Powers Agreement requires approval of an operating and capital budget each year; and

WHEREAS, the adoption of an operating and capital budget is necessary for obtaining Federal, State and Local funds to support the San Joaquin Regional Rail Commission; and

WHEREAS, the San Joaquin Regional Rail Commission (Rail Commission) Budget incorporates the operating, shuttle and capital budget for the Altamont Corridor Express (ACE) Service and the San Joaquin Intercity Service; and

WHEREAS, the Rail Commission, ACE and San Joaquin service projects and programs have separate revenue and expense accounts; and

WHEREAS, the Executive Director has prepared and presented an operating budget of \$79,922,772 and a capital budget of \$241,328,476 which sets forth the projected revenues and expenses associated with the San Joaquin Regional Rail Commission for Fiscal Year 2018/2019; and

WHEREAS, as part of the budget approval process, the Executive Director is responsible for, and authorized to implement, the adopted budget; and

WHEREAS, there are many business expenses that are routine in nature and are required to conduct the ordinary day-to-day activities of the Rail Commission, ACE and the San Joaquin Joint Powers Authority; and

WHEREAS, the Executive Director is authorized to make these ongoing expenditures within the approved levels of the adopted budget; and

WHEREAS, all budget increases, amendments, or transfers between major budget categories are submitted to the Board for approval, and the Executive Director has the authority to transfer funds within a major budget category; and

WHEREAS, revenue and expense reports comparing the cumulative revenue receipts and expenses to the approved budget are submitted to the Commissioners as part of the monthly meeting packets; and

WHEREAS, these reports provide the Commissioners an opportunity to monitor the budget status regularly throughout the fiscal year and make recommended adjustments when necessary.

NOW THEREFORE, BE IT RESOLVED that the Board of Commissioners of the San Joaquin Regional Rail Commission approve the SJRRC/ACE/SJJPA Fiscal Year 2018/2019 Work Program and Operating Budget in the amount of \$79,922,772 and Capital Budget in the amount of \$241,328,476.

PASSED AND ADOPTED, by the Board of Commissioners this 1st day of June 2018, by the following vote:

AYES: 7 Haggerty, Marchand, Elliott, Zuber, Moorhead, Fugazi, Chair Dresser

NOES: 0

ABSENT: 1 Johnson

ABSTAIN: 0

ATTEST: 0

SAN JOAQUIN REGIONAL
RAIL COMMISSION:


STACEY MORTENSEN, Secretary


STEVE DRESSER, Chair